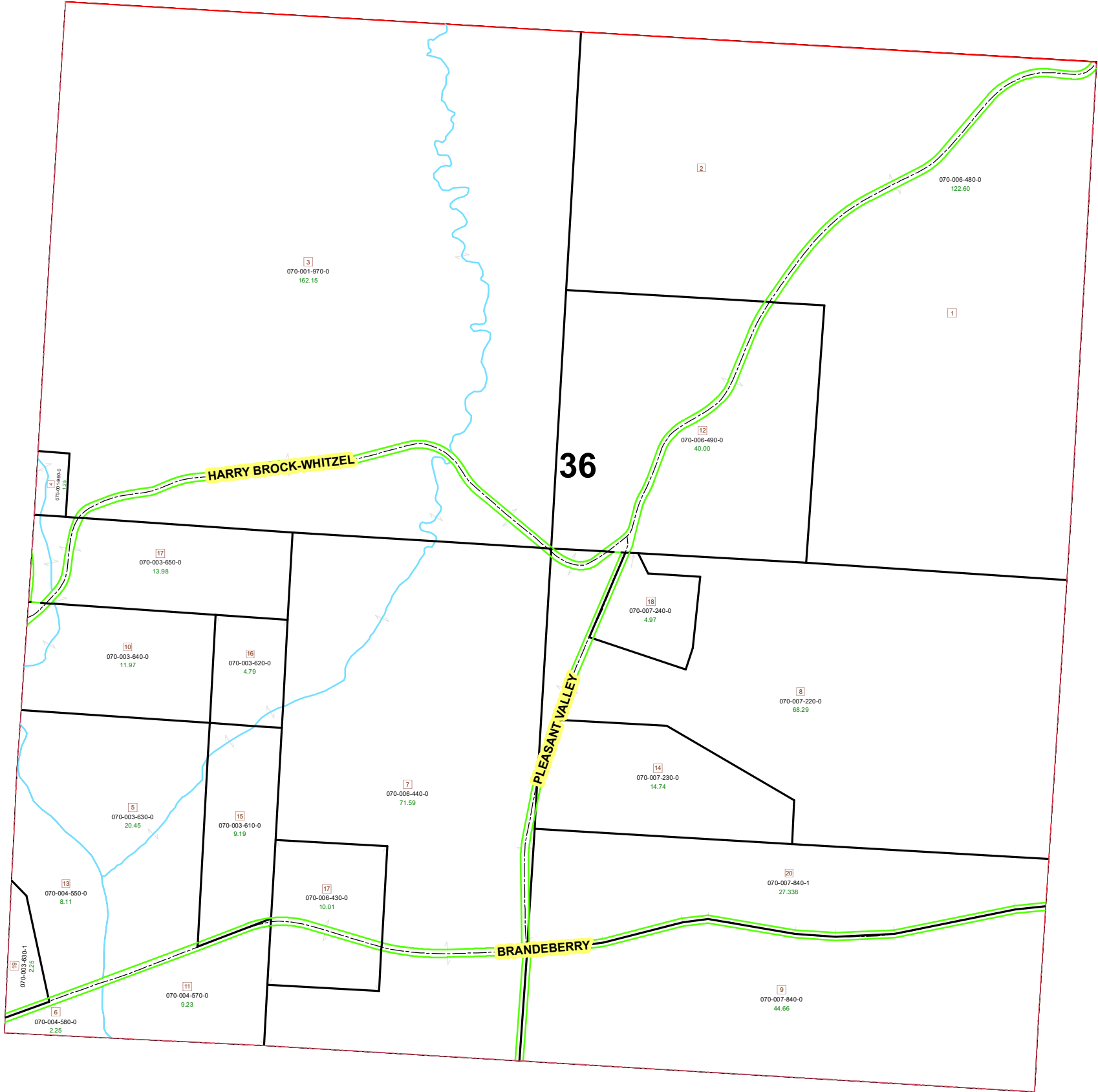


MALTA TOWNSHIP SECTION 36 R-13 TWP-09 MORGAN COUNTY, OH



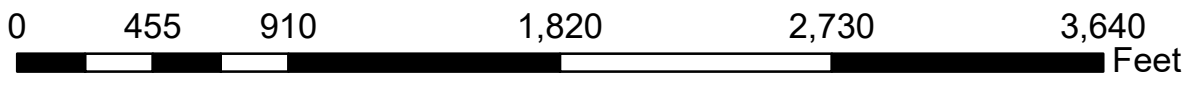
PIN	VOL	PAG	Owner	LegalDescr	Acres
070-001-960-0	OR204	455	FOUTS GREEN AMY L TRUSTEE	R12 T09 S36 SD 4	1.25
070-001-970-0	OR204	455	FOUTS GREEN AMY L TRUSTEE	R13 T09 S36 SD 3	162.15
070-003-630-1	OR52	329	KENNEY RALPH W & LORETTA	R12 T09 S36 SD 19	2.248
070-003-650-0	OR168	558	KENNEY THOMAS A & NANCY A TRUSTEE O	R12 T09 S36 SD 17	13.98
070-003-610-0	OR168	558	KENNEY THOMAS A & NANCY A TRUSTEES	R12 T09 S36 SD 15	9.19
070-003-630-0	OR168	558	KENNEY THOMAS A & NANCY A TRUSTEES	R12 T09 S36 SD 5	20.452
070-003-620-0	OR168	558	KENNEY THOMAS A & NANCY A TRUSTEES	R12 T09 S36 SD 16	4.79
070-003-640-0	OR168	558	KENNEY THOMAS A & NANCY A TRUSTEES	R12 T09 S36 SD 10	11.97
070-004-550-0	D.V 125	425	MCCONKEY JAMES H & JANICE R	R12 T09 S36 SD 13	8.11
070-007-230-0	OR225	2546	MCCONKEY JAMES H & MCCONKEY SARA L	R13 T09 S36 SD 14	14.74
070-007-240-0	OR225	2546	MCCONKEY JAMES H & MCCONKEY SARA L	R13 T09 S36 SD 18	4.973
070-007-220-0	OR225	2546	MCCONKEY JAMES H & MCCONKEY SARA L	R13 T09 S36 SD 8 S	68.287
070-004-580-0	OR175	793	MCCONKEY MORGAN 47 LTD	R13 T09 S36 SD 6 LI	2.25
070-004-570-0	OR175	793	MCCONKEY MORGAN 47 LTD	R13 T09 S36 SD 11	9.23
070-007-840-0	OR122	560	WILSON JAY L & BARBARA K TRUSTEES OF	R13 T09 S36 SD 9	44.662
070-006-430-0	OR226	1657	WILSON MARK D & CINDY L	R13 T09 S36 SD 17	10.01
070-007-840-1	OR226	1657	WILSON MARK D & CINDY L	R13 T09 S36 SD 20	27.338
070-006-440-0	OR226	1657	WILSON MARK D & CINDY L	R13 T09 S36 SD 7 S	71.59
070-006-490-0	OR112	3448	WILSON MARK D & CINDY L	R13 T09 S36 SD 12	40
070-006-480-0	OR112	3448	WILSON MARK D & CINDY L	R12 T09 S36 SD 1-2	122.6



Boundaries

- Hidden (dashed line)
- Hydro (blue line)
- Roads (dashed line)
- County (thick grey line)
- Parcel (thin black line)
- Parcels (white box)
- ROW (green line)
- Section (red line)
- Township (dotted line)

Source: Morgan County Engineer's Office
 Author: Marcia Wolfe
 Date: 6/25/2020



Disclaimer: The information that these maps contains is for reference purposes only. Please bring any errors to the attention of the Engineer's Office staff.
 Thank you